

# DÜREN

## TOOLS

Code: 521981

### Under-body Coating Gun

Product Information Guide



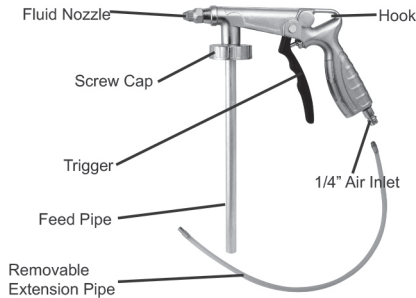
PLEASE KEEP THIS MANUAL SAFE FOR FUTURE REFERENCE

[www.duren.co.uk](http://www.duren.co.uk)



## **IMPORTANT**

**Please read through this Manual carefully before using the 521981.**  
This tool must only be used for spraying and within the parameters outlined in this manual. All users of the equipment should be trained in any risks associated with the products they are spraying or using as spraying and finishing aids.



## **Wise Precaution**

This product is free from contaminants.  
However, we do recommend that you flush your gun through with a suitable thinner before use as a preventative precaution.

## **Specification**

Air Inlet	1/4"
Working Pressure	30-120PSI/2-8.3BAR
Maximum Pressure	150PSI/10BAR

## **Tool Use**

This tool is ideal for applying sealants to vehicles and other industrial applications.

## **General Safety Instructions**

- Users must choose the correct spraygun, with suitable setup and product, for the job requirement.
- Before connecting the spraygun, check the air pressure available is suitable.
- Follow all HSE guidelines regarding sprayguns and their use as well as your own Health & Safety Policy.
- Switch off air source before refilling, cleaning or servicing the spraygun.
- Never leave your spraygun exposed to dust, silicone, acids vapors, explosive or flammable gases, rain, sun, fog or snow.
- Ensure the air line cannot be twisted, pinched or damaged.
- NEVER carry tool by the air hose.
- Never expose air hose to heat, oil, water or sharp edges.
- DO NOT allow children to use or play with this tool or enter the work area.
- DO NOT store this tool in a place that is within reach or accessible to children or unauthorised persons.
- Store this tool in a dry and secure location.
- DO NOT open or tamper with any part of this tool. Cleaning and servicing of the spraygun is permitted but repairs can and must only be carried out by an authorised service centre.

Duren Tools, UK

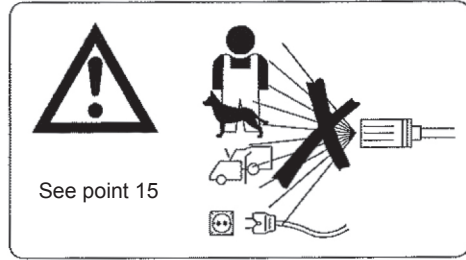
E: sales@duren.co.uk W: www.duren.co.uk





PLEASE KEEP THIS MANUAL IN A SAFE PLACE FOR FUTURE REFERENCE

- 13 ALWAYS spray in a well ventilated area.
- 14 ALWAYS wear an approved respirator when using this machine.
- 15 DO NOT spray at animals, plants, electrical sources, other persons or their property under any circumstance.
- 16 ALWAYS keep you work area clean and tidy. Untidy work areas are a hazard to yourself and others.
- 17 ALWAYS maintain a stable, secure and comfortable posture when working with this tool. Always avoid stretching and over reaching.
- 18 Avoid using a platform or hop up when using this tool.
- 19 ALWAYS stand on a stable, dry, non-slip surface and wear protective footwear when using this tool.
- 20 Always wear or use the relevant PPE, protective footwear, appropriate gloves, ear defenders, respirator and eye protection must always be worn. Do not wear loose clothing, rings or jewellery and tie long hair back.
- 21 Unauthorised persons and children should not be allowed near the work area or to use the tool and should not be left alone with it.
- 22 All visitors should be made aware of the tool and the hazards relating to it, including but not limited to;
- A: The potentially hazardous nature of the paint material and implications of contact with skin, eyes, clothing and the breathing of vapours.
- B: Trailing air hoses and trip hazards
- C: Slippery surfaces and mess caused by over spray, accidental discharge and spillages.
- D: The risk of accidental discharge.
- E: Avoidance of freshly painted surfaces or workpieces.
- 23 DO NOT hold the workpiece with your hands. Always use clamps or a vice for the best and safest results.
- 24 Ensure that adequate air ventilation and fume extraction is installed in the spraying area if indoors and that it is in good working order.
- 25 If painting outdoors, ensure that over spray is not falling on private property such as cars, bikes, drive ways, windows, etc. and that there is not entry of product into watercourses and irrigation ditches.
- 26 Disconnect air supply to the tool when changing accessories.
- 27 Switch tool off when moving to a new position.
- 28 Make sure that you have enough slack in the air line to enable unimpeded movement.
- 29 **BE AWARE OF YOUR SURROUNDINGS.** Other persons activities may have potentially lethal implications for you. Likewise, make sure that others around you are aware of your presence and activities and that your own actions are not impeding or harming those around you.
- 30 DO NOT use this tool if parts are missing or damaged. Doing so will invalidate the warranty and may cause yourself or others harm.
- 31 Use only approved service or replacement parts. Not doing so will invalidate the warranty and may cause yourself or others harm.
- 32 DO NOT use incompatible accessories or attachments. Doing so will invalidate the warranty.
- 33 DO NOT attempt to use this tool for any job or purpose outside of its design parameters and capabilities. Doing so will invalidate the warranty.
- 34 Repairs carried out by unauthorised repair agents will invalidate the warranty unless you have been given specific permission by Fast Mover Tools on a case by case basis only.
- 35 Do not use this tools whilst under the influence of drugs, alcohol or intoxicating



Duren Tools, UK

E: sales@duren.co.uk W: www.duren.co.uk





521981

## Instruction Manual

- medication.
- 36 Do not spray at or near and naked flame or any source of ignition.
  - 37 DO NOT spray any material without first consulting a Material Safety Data Sheet. If one is not available it is advised that you source an alternative material.
  - 38 Be aware of the dangers of working in or on and building or material containing asbestos. Always take appropriate measures up to an including contracting licensed 3rd parties to remove and/or make safe any asbestos.
  - 39 If the material sprayed makes contact with eyes, skin or enters the respiratory system take appropriate measures as advised by the HSE and your own Health and Safety guidelines. If in doubt, seek medical help.
  - 40 NEVER point air supply hose at yourself or others.

## OPERATING INSTRUCTIONS

- 1 Screw the gun onto a canister of schutz underbody coating or similar.
- 2 Regulate the air supply to 6 Bar (90psi) and then attach the air supply to the gun.
- 3 Point the nozzle to a scrap piece of material and depress the trigger to trial for correct operation

Using the flexible injection probe.

The 521981 underbody coating gun is supplied with a detachable flexible injection probe. Use this probe to access cavities and other hard to reach areas.

This injection probe is for low viscosity cavity wax and not for underbody waxes that have a higher viscosity.

Use nozzle for underbody wax and it may be advisable to warm the product prior to application. Do not attempt to spray underbody wax through the injection probe.

## MAINTAINANCE

To prolong the life of the gun both gun and probe should be thoroughly cleaned after use with hydrocarbon solvents such as benzene-white spirit or other petroleum based cleaner.

No deposits should be left in the gun or probe.

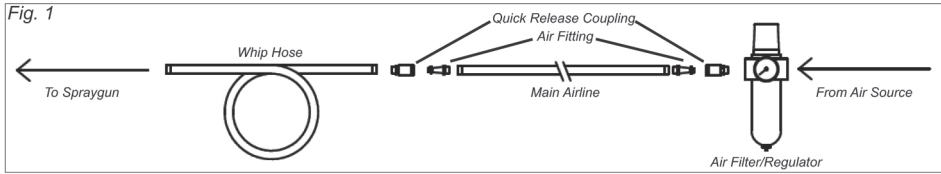
Duren Tools, UK

E: sales@duren.co.uk W: www.duren.co.uk





PLEASE KEEP THIS MANUAL IN A SAFE PLACE FOR FUTURE REFERENCE

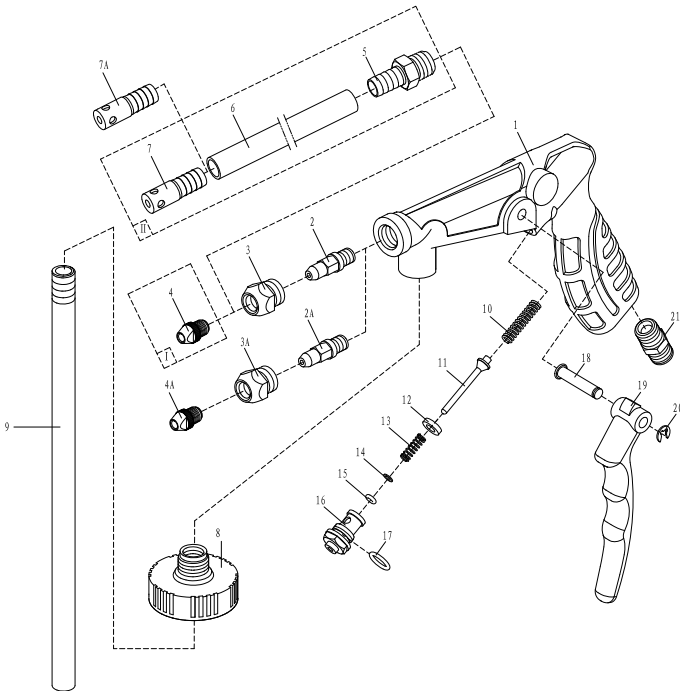


Duren Tools, UK  
E: [sales@duren.co.uk](mailto:sales@duren.co.uk) W: [www.duren.co.uk](http://www.duren.co.uk)



PLEASE KEEP THIS MANUAL IN A SAFE PLACE FOR FUTURE REFERENCE

## Parts Diagram



No.	Description
1	Gun Body
2	Air Nozzle
3	Nozzle Seat
4	Nozzle
5	Connector
6	Extension Tube
7	Five Hole Nozzle
8	Cover
9	Feed Tube
10	Air Valve Spring
11	Air Valve Stem
12	Sealing Gasket
13	Air Valve Spring
14	Gasket 3
15	O-Ring 2x2
16	Air Valve Body
17	O-Ring 8x1.8
18	Trigger Pin
19	Trigger
20	Opening Stopper 4
21	1/4" Air Inlet

Duren Tools, UK

E: sales@duren.co.uk W: www.duren.co.uk

521981

Instruction Manual

## Warranty

We hope that you will be very happy with your purchase. If you do have a problem with your tool, you have the added peace of mind of a 12 month warranty, which comes into date from the date of purchase (proof of purchase required).

### Scope of Warranty

- The warranty will cover you from all faults cause by defective components or poor workmanship.
- Tools sent outside the EU are not covered by this warranty.
- Product must be returned to us, the warranty does not cover cost of carriage.
- If the product is no longer in manufacture, it will be replaced with a tool of equivalent or higher specification.

### What is not covered

- Normal wear and tear caused by use in accordance with the operating instructions.
- Replacement of any provided accessories, such as Backing Pads, Airline Connections, Air Fittings, Blades, Spanners, etc.
- Accidental damage, faults caused by negligent use or care, neglect, misuse or careless operation, handling and storage of the product.
- Modification of, or change of, any part of this product in any way.
- Faults caused by use of non compatible accessories.
- Tool seizure caused by insufficient oiling.
- Faults caused by incorrect installation.
- Repairs or alterations carried out by non-approved parties.
- Traced of water or rust inside tool - this shows that a properly working air filter has not been used.

### Validity

- This warranty is valid for 12 months after date of purchase.
- Warranty is rendered invalid if;
  - Tool is taken apart for any reason without our consent.
  - Tool is not maintained daily.
  - Air supply line is not used with a properly working air filter.



**Please look after the environment, dispose of all packaging in a responsible way.  
Always dispose of tools in accordance with local authority guidelines.**

© 2013 Fast Mover Tools Limited. This document is copyright and is not to be copied, circulated, distributed or shown to anyone other than the intended recipient without the express permission of Fast Mover Tools.

Duren Tools, UK

E: sales@duren.co.uk W: www.duren.co.uk